



---

## Twilight Switch LUMANDAR 1000 Solar cell Technology

---

### DESCRIPTION

LUMANDAR is the reference in twilight switches: Its patented solar cell technology is as sensitive as the human eye. LUMANDAR switches on public lighting only when necessary: energy conservation. Its 4 Lux sensitivity is designed for public lighting; it switches light only when required for the human eye.

Solar cell technology is durable. For years, your lighting will be always activated at the same moment, and with the same degree of precision. Easy to install and wire; well sealed, it is made for outdoor installation and can be installed anywhere. Self-contained with relay output, no accessories are required.

### FEATURES AND ADVANTAGES

---

- Accurate and durable, thus conserving energy
- Nearly a million units sold since 1954

### POSSIBLE APPLICATIONS

---

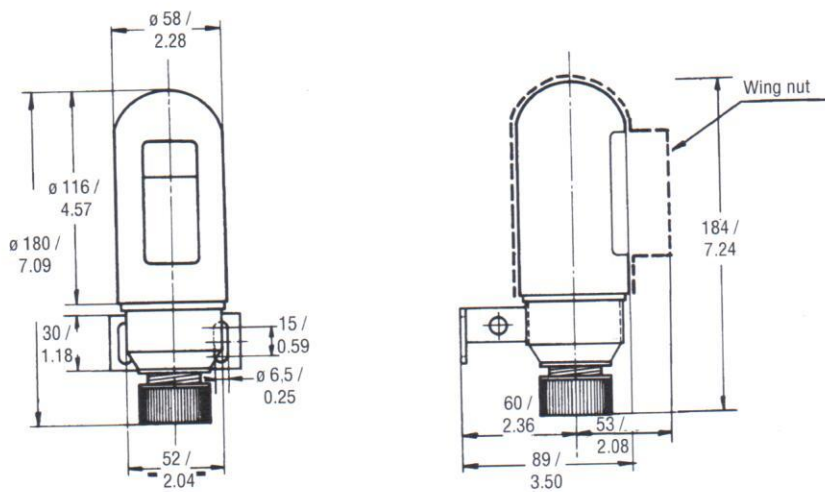
Public area street lighting:

- streets,
- parking lots,
- underground walkways,
- train platforms.

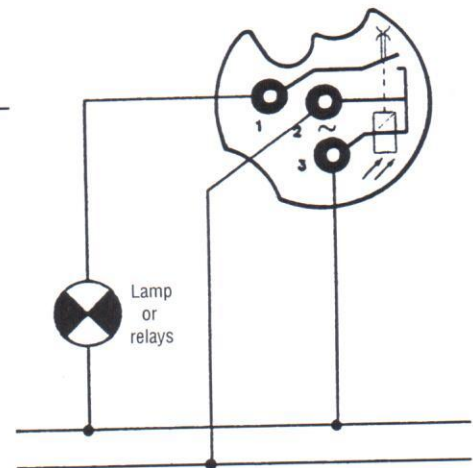
**Table 1: Technical specifications**








Parameters	Features
Orientation	360°
Sealing	IP 67
Power supply	50 or 60 Hz
Consumption	1,5 VA
Hysteresis	12%
Switching capacity	8A to 250Vac on resistive load 6A cos φ 0,85 4A cos φ 0,6
Maximum power	2.200 VA
Weight	Complete model: 300g / 660 lbs
Operating temperature	-30°C to +70°C / -22°F to +158°F
<i>Suitable to prescription B36 from EDF (Electricité de France)</i>	

**Figure 1: Mechanical dimensions (mm/in)**



**Figure 2. Wiring specifications**



ORDERING INFORMATION			
Part number		Description	
STANDARD		<i>Standard models :</i>	
		FF-LUA <sup>Ⓜ</sup> 44R <sup>Ⓜ</sup>	Standard complete 4 Lux (contact closed by night) with bracket and base
		<b>FF-LUAN44RH</b>	220/240 Vac
		FF-LUAN44RC	24 Vdc
		FF-LUAN44RD	48 Vdc
	<i>Model with 30 s time delay on/off :</i>		
	<b>FF-LUAT44RH</b>	220/240 Vac	
		FF-LUZSE851	Adjustable wing nut. Reduces the effects of the lateral light interference. By rotating the cover, the nominal value is multiplied by 8.
		FF-LUZFA800	Attenuation kit with 4 different values. Use with the FF-LUZSE851 wing nut. The sensitivity thresholds are multiplied by 25, 50, 150, 300 (the 100 Lux base model should be used).
		FF-LUZFA801	The sensitivity thresholds are multiplied by 20, 80, 100, 200.
	FF-LUZSE021	14 mm / 0.5 in eye rod threaded to 230 mm / 9 in.	
SPARE PARTS		<b>FF-LUAN74R0</b>	LUMANDAR only – 4 Lux
		FF-LUAN75R0	LUMANDAR only – 50 Lux
		FF-LUAN71R0	LUMANDAR only – 100 Lux
		FF-LUAT74R0	Time delayed 30 s
	24-48 V low voltage model Replace the number 7 with 6 (e.g. FF-LUAN74R0 becomes FF-LUAN64R0) for the LUMANDAR only.		
	FF-LUZSE17 <sup>Ⓜ</sup>	Support for Vac or Vdc current (with locking screw) <sup>Ⓜ</sup> = C = 24 V <sup>Ⓜ</sup> = F = 110/127 V <sup>Ⓜ</sup> = H = 220/240 V <sup>Ⓜ</sup> = D = 48 V	
	FF-LUZSE020	Attachment with screw or circular collar	

In bold, preferred models

## WARRANTY/REMEDY

COMETA warrants goods of its manufacture as being free of defective materials and faulty workmanship. Contact your local sales office for warranty information. If warranted goods are returned to COMETA during the period of coverage, COMETA will repair or replace without charge those items it finds defective. The foregoing is Buyer's sole remedy and is **in lieu of all other warranties, expressed or implied, including those of merchantability and fitness for a particular purpose.** Specifications may change without notice. The information we supply is believed to be accurate and reliable as of this printing. However, we assume no responsibility for its use. While we provide application assistance personally through our literature, it is up to the customer to determine the suitability of the product in the application.