

MICRO SWITCH

A DIVISION OF MINNEAPOLIS-HONEYWELL REGULATOR COMPANY
 FREEPORT, MASSACHUSETTS
 FED. MFR. CODE 91929

SWITCH - BASIC

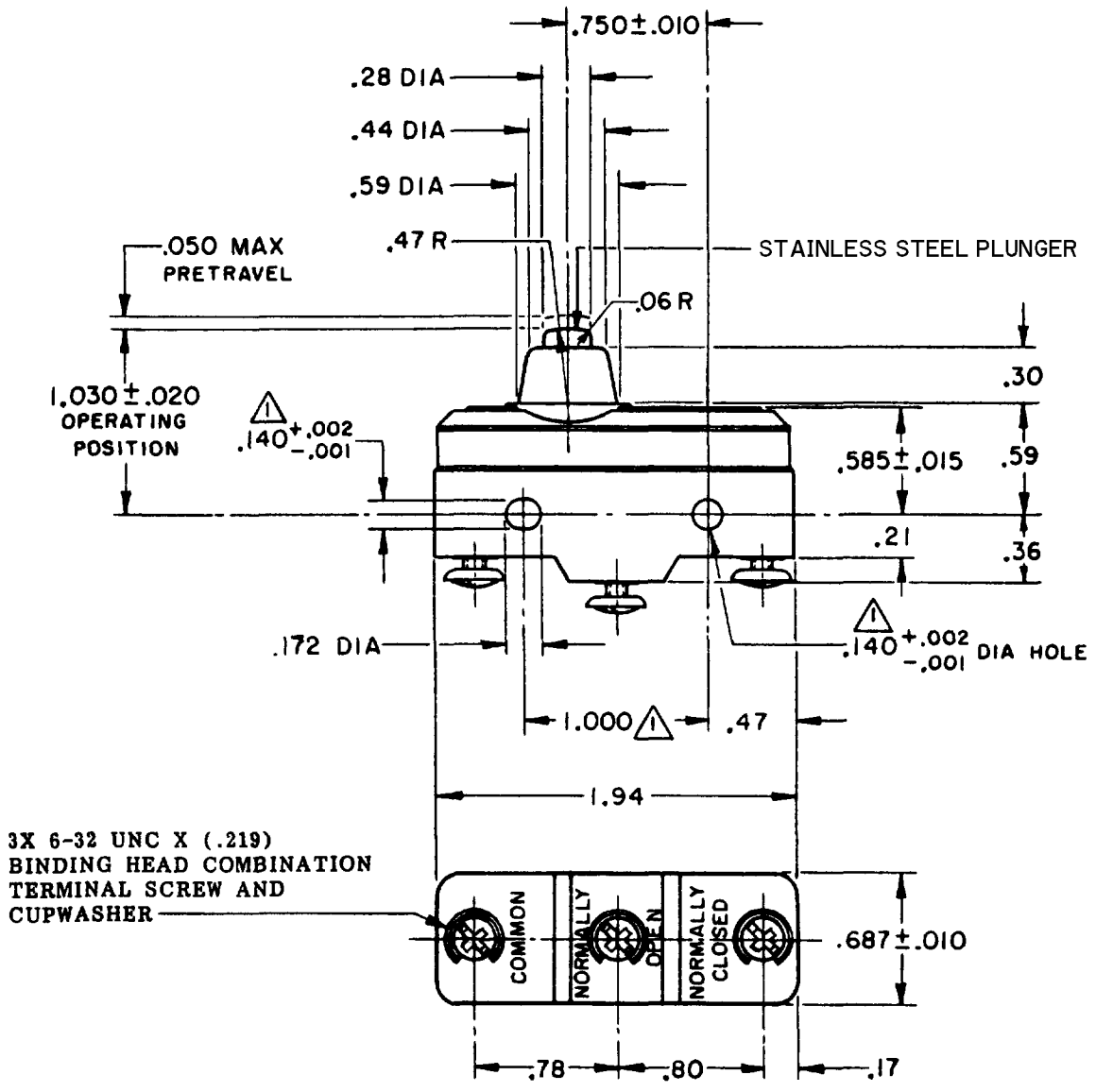
CATALOG LISTING
BA-2RB-A2

ABJ5000

CATALOG LISTING
BA-2RB-A2
 PAGE 1 OF 1
 DRAWING NUMBER
M
 ISSUE
8
 REVISIONS

| | | |
|---|-------------|-----------|
| A | CO 9600 | 29 APR 60 |
| B | CO34310 | 07 MAR 66 |
| C | CO-73287-J | 22 NOV 93 |
| D | CO 77590 | 08 JUN 94 |
| E | CO93346 | |
| F | DLT 95750-B | 22 AUG 98 |
| G | CSL 0018682 | 29 MAR 00 |
| | TSG | 07 MAR 06 |

 CHECK
 60
 APR 29
 FORMTEK
 3-50378



THIS DRAWING COVERS A PROPRIETARY ITEM AND IS THE PROPERTY OF MICRO SWITCH, A DIVISION OF MINNEAPOLIS-HONEYWELL REGULATOR CO. THIS DRAWING IS NOT TO BE COPIED OR USED WITHOUT THE APPROVAL OF MICRO SWITCH.

| CHARACTERISTICS | |
|---------------------|------------|
| OPERATING FORCE | 14-22 OZ |
| RELEASE FORCE | 10 OZ MIN |
| DIFFERENTIAL TRAVEL | .002-.0075 |
| OVERTRAVEL | .094 MIN |

| ELECTRICAL DATA | |
|--------------------------------|--|
| CONTACT ARRANGEMENT S P D T | |
| L23 | 20A - 125, 250 OR 480 VAC 10A - 125 VAC "L" |
| L288 | 1HP - 125 VAC, 2HP - 250 VAC |
| L308 | 1/2A - 125 VDC, 1/4A - 250 VDC |
| L315 | |
| | |
| 20(3)A 250V T85 5E4 | |

| SCALE FULL | |
|---|--------------|
| DO NOT SCALE PRINT | |
| UNLESS OTHERWISE SPECIFIED DIMENSIONS ARE IN INCHES | |
| TOLERANCES ARE: | |
| ONE PLACE | (.0) ±.030 |
| TWO PLACE | (.00) ±.015 |
| THREE PLACE | (.000) ±.005 |
| ANGLES | ± |
| WEIGHT .064 LB | |