

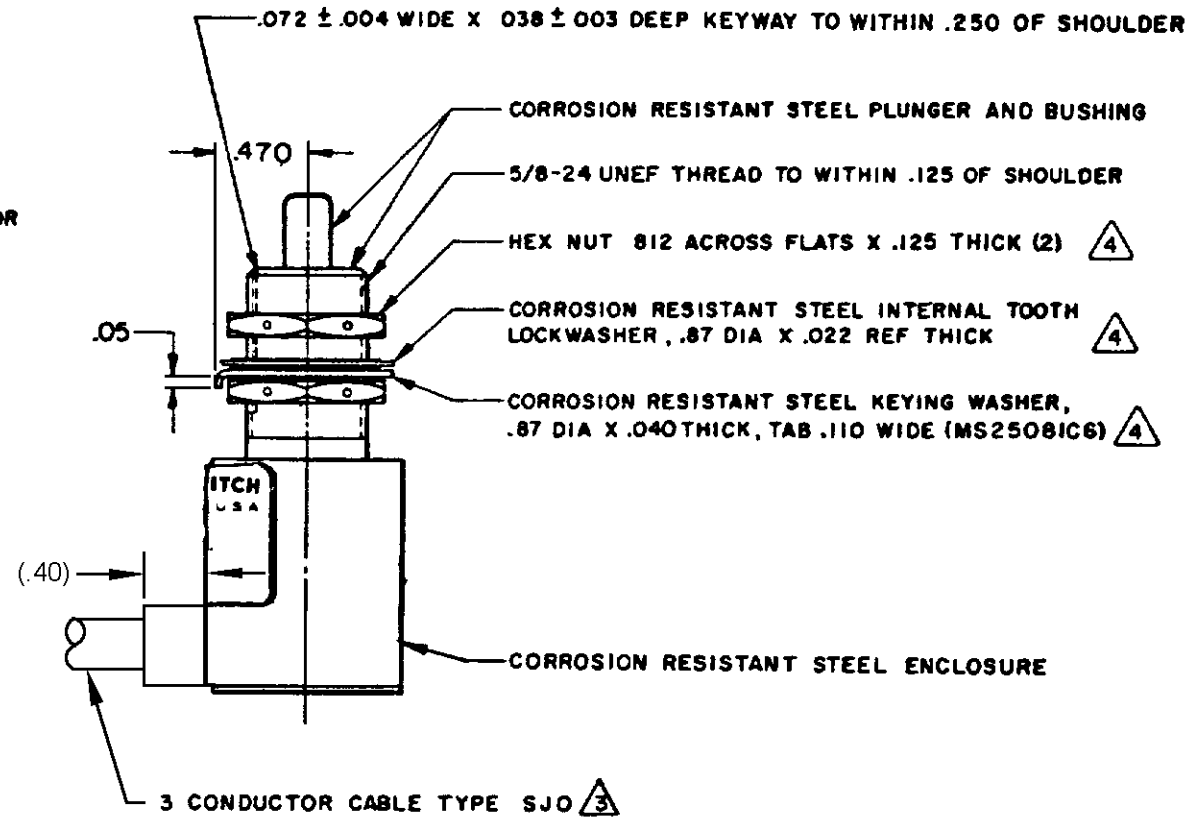
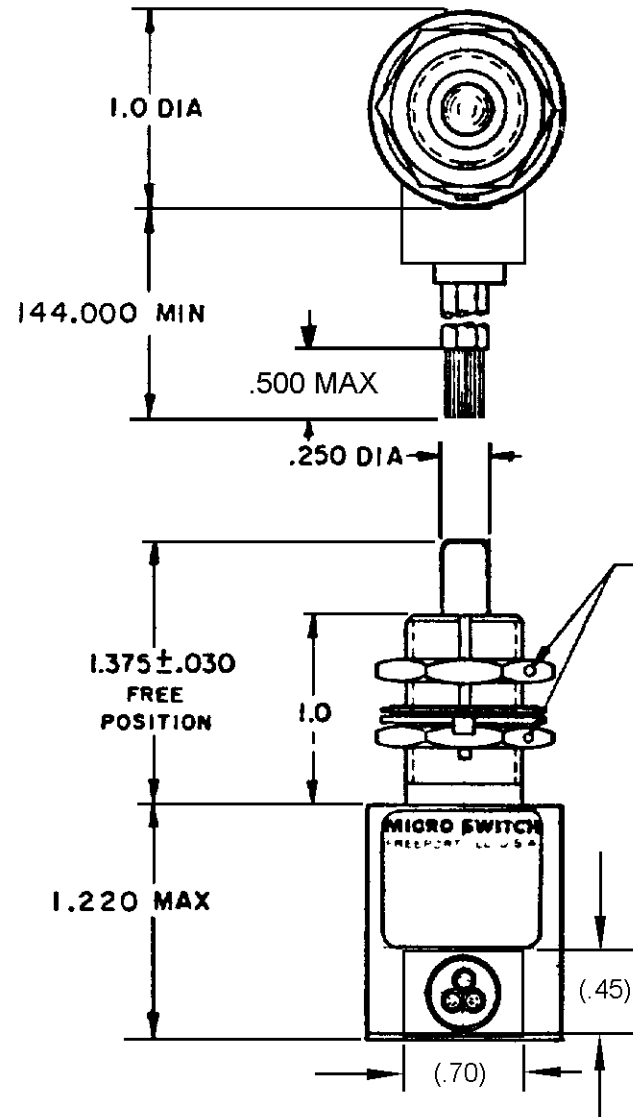
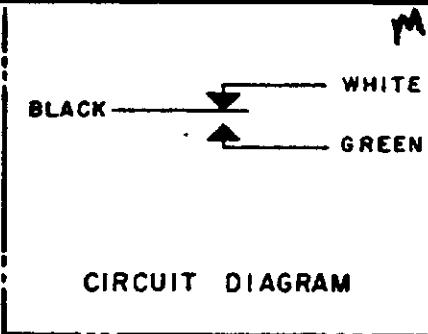
MICRO SWITCH

FREEPORT ILLINOIS U.S.A.
A DIVISION OF HONEYWELL

FED. MFG. CODE 91929

SWITCH-ENCLOSED

CATALOG LISTING
1CH28-12



M 1CH28-12
 DRAWING NUMBER
 ISSUE 6
 RJ 27OCT05
 CHECK 05APR05
 AK 14 MAR 89
 TSK
 WJM 13 MAR 89
 DRAWN
 RASTER
 FO-52851-B

REVISIONS

A	PR17175	WJM	13 MAR 89
B	C074101	LJF	2 FEB 93
C	CO 77000	LAB	2 MAY 94
D	0012074	KSR	05 APR 05
E	0016449	KSR	27 OCT 05

THIS DRAWING COVERS A PROPRIETARY ITEM AND IS THE PROPERTY OF MICRO SWITCH A DIVISION OF MINNEAPOLIS-HONEYWELL REGULATOR CO. THIS DRAWING IS NOT TO BE COPIED OR USED WITHOUT THE APPROVAL OF MICRO SWITCH.

CHARACTERISTICS		ELECTRICAL DATA		SCALE FULL	
OPERATING FORCE	6 - 12 LB	CONTACT ARRANGEMENT	DO NOT SCALE PRINT		
FULL OVERTRAVEL FORCE	30 LB MAX	S P D T	UNLESS OTHERWISE SPECIFIED		
RELEASE FORCE	4 LB MIN		DIMENSIONS ARE IN INCHES		
PRETRAVEL	.040 MAX		TOLERANCES ARE		
DIFFERENTIAL TRAVEL	.020 MAX		ONE PLACE (.0)	2.000	
OVERTRAVEL	.250 MIN		TWO PLACE (.00)	2.015	
			THREE PLACE (.000)	2.000	
			ANGLES	2	
			WEIGHT	18 OZ MAX	

NOTES

- SWITCH SEALED PER MIL-PRF-8805 SYMBOL 3
 - CIRCUIT DIAGRAM, CATALOG LISTING AND DATE CODE ARE SHOWN ON NAMEPLATE
- WIRE LEADS COLOR CODED TO SHOW LEAD IDENTIFICATION
HARDWARE MAY BE PACKAGED UNASSEMBLED PER MIL-PRF-8805